

PLEASE CHECK WWW.MOLEX.COM FOR LATEST PART INFORMATION

Part Number: [0579899810](#)
Status: **Active**
Description: MP-Lock™ Female Terminal, for 14-18 AWG (2.00-0.85mm²), Metal Strip, Tab 6.35 by 0.40mm (.250 by .016"), Pre-Tin Plated

Documents:

[Drawing \(PDF\)](#) [RoHS Certificate of Compliance \(PDF\)](#)
[Product Specification PS-57989-001 \(PDF\)](#)

Agency Certification

UL E92853

General

Product Family Quick Disconnects
 Series [57989](#)
 Crimp Quality Equipment Yes
 Product Name MP-Lock™
 Type Quick Disconnect

Physical

Barrel Type Open
 Gender Female
 Glow-Wire Compliant No
 Insulation None
 Lock to Mating Part Yes
 Material - Metal Brass
 Material - Plating Mating Tin
 Material - Plating Termination Tin
 Orientation Straight
 Packaging Type Reel
 Plating min: Mating (µin) 32.00
 Plating min: Mating (µm) 0.800
 Plating min: Termination (µin) 32.00
 Plating min: Termination (µm) 0.80
 Polarized to Mating Part Yes
 Tab Thickness 0.81mm (.032")
 Tab Width 6.35mm (.250")
 Temperature Range - Operating -40°C to +105°C
 Termination Interface: Style Crimp or Compression
 Wire Insulation Diameter 3.40mm (.134") max.
 Wire Size AWG 14, 16, 18
 Wire Size mm² 0.85 - 2.00

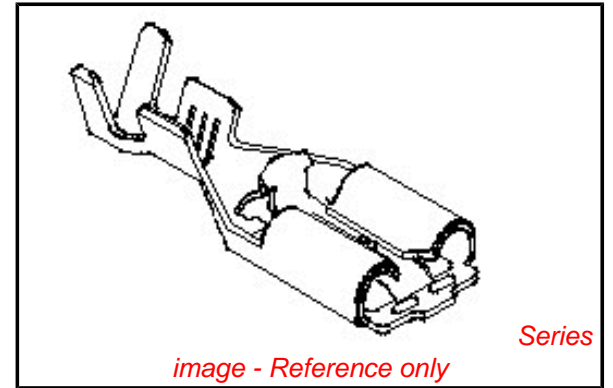
Electrical

Voltage - Maximum 250V

Material Info

Reference - Drawing Numbers

Product Specification PS-57989-001
 Sales Drawing SD-57989-001



EU RoHS

ELV and RoHS Compliant
REACH SVHC Contains SVHC: No
Halogen-Free Status

China RoHS



Need more information on product environmental compliance?

Email productcompliance@molex.com
 For a multiple part number RoHS Certificate of Compliance, [click here](#)

Please visit the [Contact Us](#) section for any non-product compliance questions.

Search Parts in this Series
[57989Series](#)

DWG. NO.
SD-57989-001

SIMILAR ITEM

PROJECT NO.

B

DO NOT SCALE DRAWING
DIMENSION IN METRIC

8 7 6 5 4 3 2 1

F

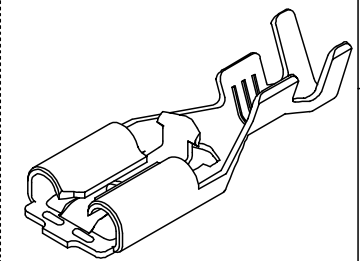
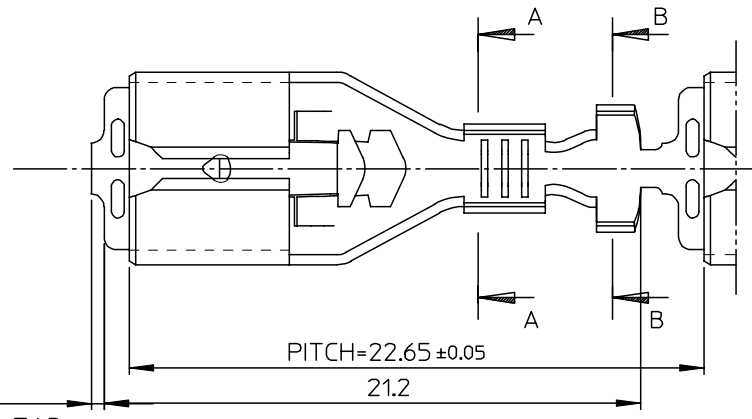
E

D

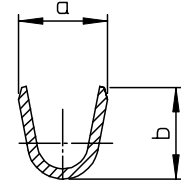
C

B

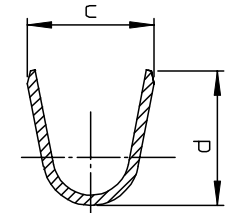
A



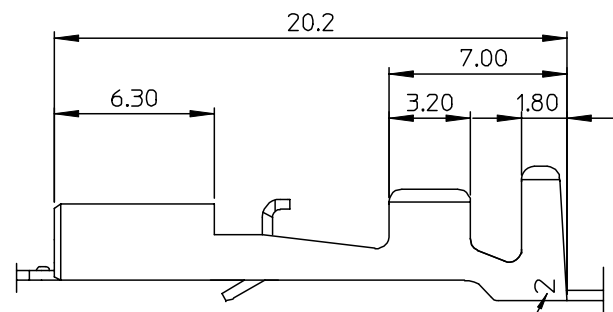
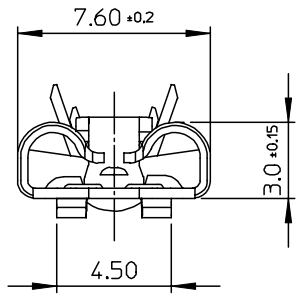
ISOMETRIC VIEW



SECTION D-D



SECTION E-E



MK2
(TRADE MARK)

MATERIAL NO.	ENG NO.	a	b	c	d	WIRE SIZE
579899710	57989-9710	2.7	3.2	4.3	4.7	AWG #22-18
579899810	57989-9810	3.5	3.6	5.0	5.3	AWG #18-14
579899910	57989-9910	4.6	5.3	6.4	6.1	AWG #14-10

NOTES

- MATERIAL : BRASS, 0.4mm THICKNESS
- FINISH : PRE-TIN PLATING
(1.0MICROMETER MIN. TIN OVER 0.3MICROMETER MIN. COPPER)
- MATING TAB : 0.8mmTHICKNESS, 6.35mm WIDTH

NEW RELEASED ECN NO. KOR2003-0193 DRWN: C.B.CHIN 03/01/20 CHK: W.Y.YANG APPR: C.W.LEE	QUALITY SYMBOLS MAJOR $\nabla = 0$ CRITICAL $\nabla C = 0$	GENERAL TOLERANCES: (UNLESS SPECIFIED)		SCALE 5:1	DESIGN UNITS <input checked="" type="checkbox"/> mm <input type="checkbox"/> INCH	THIRD ANGLE PROJECTION <input type="checkbox"/> FIRST ANGLE <input checked="" type="checkbox"/> THIRD ANGLE	DIMENSIONS: <input type="checkbox"/> mm <input type="checkbox"/> INCH <input checked="" type="checkbox"/> mm ONLY	SHT REV REVISE ON CAD ONLY
		4 PLACES $\pm 0.$ mm $\pm -$ INCH	DRAWN BY & DATE C.B.CHIN 02/09/09	TITLE: .250 MP-LOCK REC' TERMINAL FOR SLEEVE				
		3 PLACES $\pm 0.$ mm $\pm -$ INCH	CHECKED BY & DATE W.Y.YANG 02/09/09					
		2 PLACES ± 0.30 mm $\pm -$ INCH	APPROVED BY & DATE C.W.LEE 02/09/09	MOLEX INCORPORATED				
1 PLACE ± 0.30 mm $\pm -$ INCH	ANGULAR: $\pm 3^\circ$	CAD FILENAME S57989AA.MI	MATERIAL NO. SEE TABLE				DRAWING NO. SD-57989-001	SHEET NO. 1 OF 1
A	REV	DRAFT WHERE APPLICABLE MUST REMAIN WITHIN DIMENSIONS		THIS DRAWING CONTAINS INFORMATION THAT IS PROPRIETARY TO MOLEX INCORPORATED AND SHOULD NOT BE USED WITHOUT WRITTEN PERMISSION.			SIZE B	

8 7 6 5 4 3 2 1 KOREA MX-A3